

# LO 10-3510-220-12

3 MAY 1990

## LAUNDRY UNIT, TRAILER MOUNTED

MODEL M85-100, NSN 3510-01-291-8169

REFERENCES: TM 10-3510-220-24 and C9100-1L

Approved for public release. Distribution is unlimited.

Intervals (on-condition or hard time) and the related man-hour times are based on normal operation. The man-hour time specified is the time you need to do all the services prescribed for a particular interval. On-conditioned (OC) oil sample intervals shall be applied unless changed by Army Oil Analysis Program (AOAP) laboratory. Change the hard time interval if your lubricants are contaminated or if you are operating the equipment under adverse operating conditions including longer-than-usual operating hours.

The hard time interval may be extended during periods of low activity. If extended, adequate preservation precautions must be taken. Hard time interval will be applied in the event AOAP laboratory support is not available.

### WARNING

Drycleaning solvent is flammable. Do not use near a flame or excessive heat. Use only with adequate ventilation. Avoid prolonged breathing of vapors and minimize skin contact.

Clean fittings before lubricating. Clean parts and around filler holes with drycleaning solvent (SD), type II or equivalent. Dry before lubricating.

Lubricate points indicated by dotted arrow shaft on both sides of equipment.

Lubricate after washing.

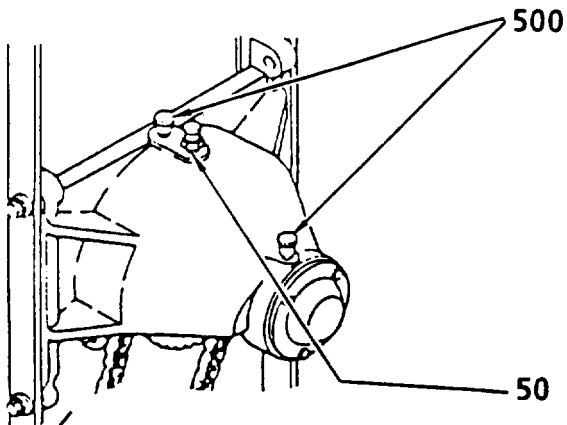
Normally drain gearcase when hot. Fill and check level.

The lowest level of maintenance authorized to lubricate a point is indicated by one of the following: (C) Operator/Crew, (O) Unit Maintenance, or (F) Direct Support Maintenance.

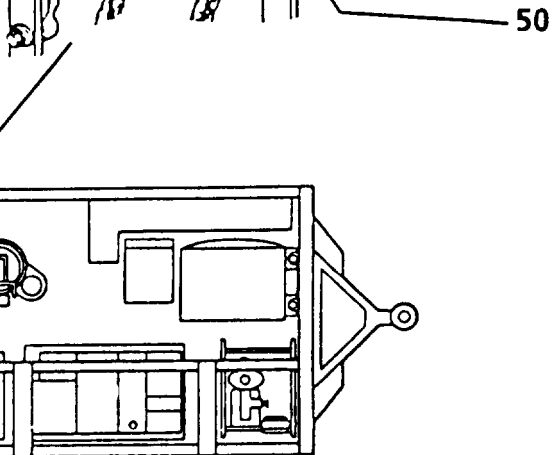
You can help improve this publication. If you find any mistakes or if you know of a way to improve the procedures, please let us know. Your letter or DA Form 2028 (Recommended Changes to Publications and Blank Forms) should be mailed directly to: Commander, US Army Troop Support Command, ATTN: AMSTR-MCTS, 4300 Goodfellow Blvd, St. Louis, MO 63120-1798. A reply will be furnished to you.

TOTAL TASK-HR		TOTAL TASK HR	
INTERVAL	TASK-HR	INTERVAL	TASK-HR
50	0.5	500	1.0
250	1.0	1000	0.5

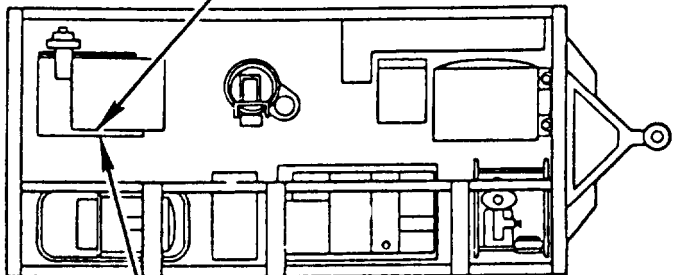
**INTERVAL • LUBRICANT**



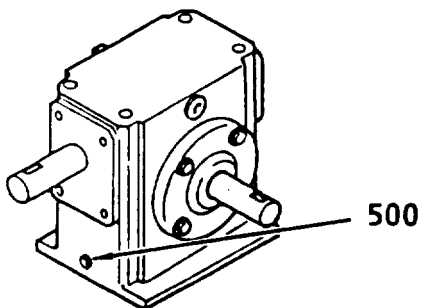
**GAA** Upper Drive Chain Sprocket Bearings (Two places) (O) (See note 1.)



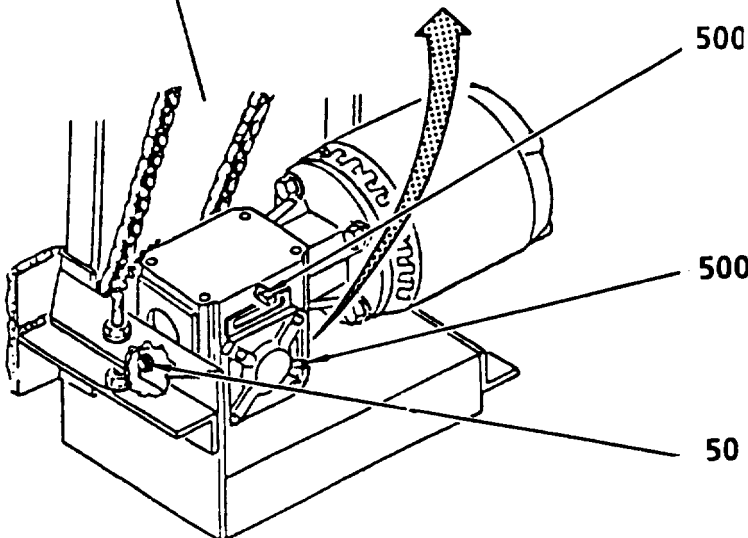
**OE/  
HDO** Drive Chain Oil Cup (O) (Lift cap and fill with oil.)



**GO** Gear Reduction Unit Drain Plug (O) (Drain and refill.)



**GO** Gear Reduction Unit Fill Plug (O) (Add oil as needed to maintain correct fluid level.)

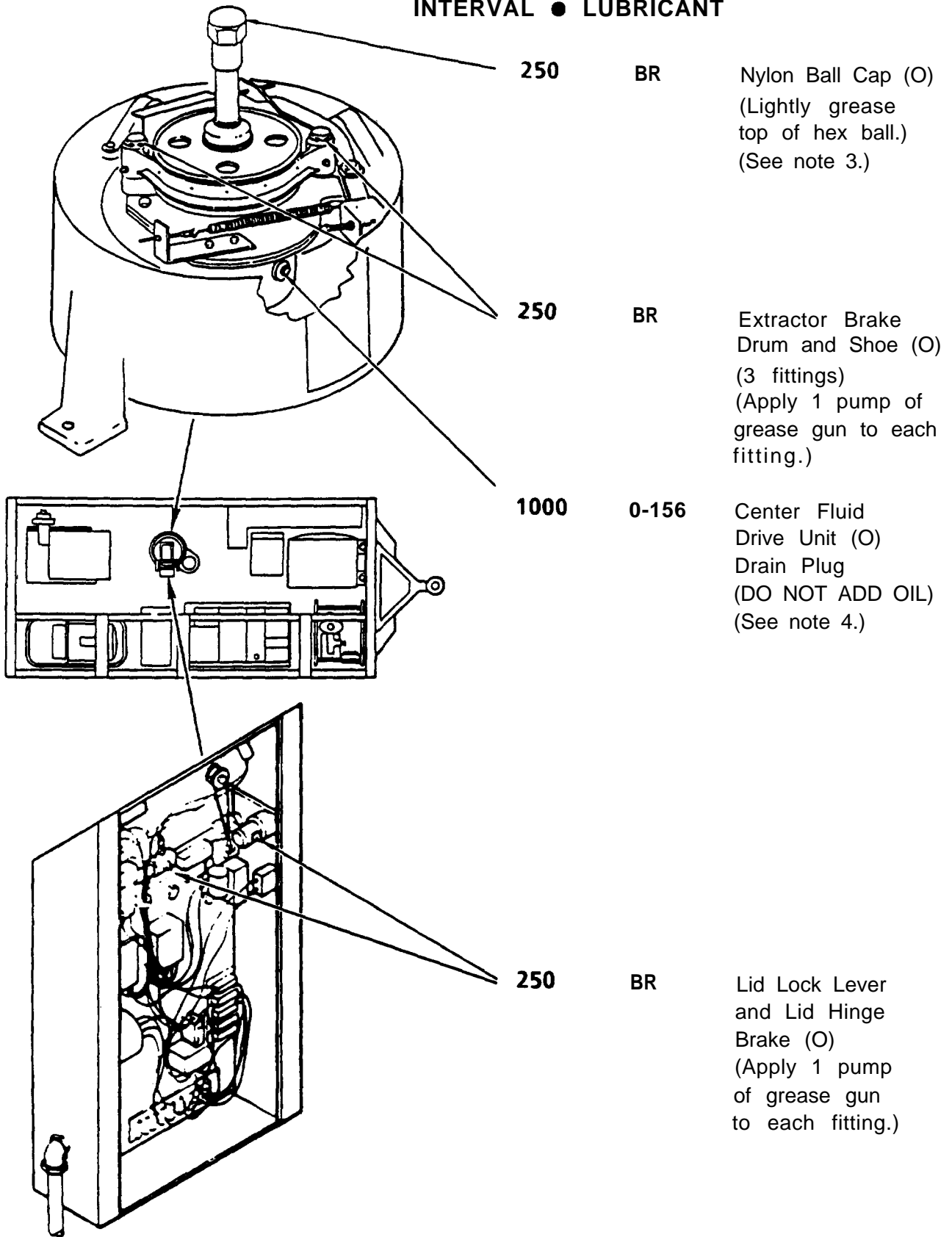


**GAA** Gear Reduction Unit Grease Fitting (O) (Apply 1 pump of grease gun.)



**GO** Gear Reduction Unit Level Plug (O) (See note 2.)

**INTERVAL ● LUBRICANT**



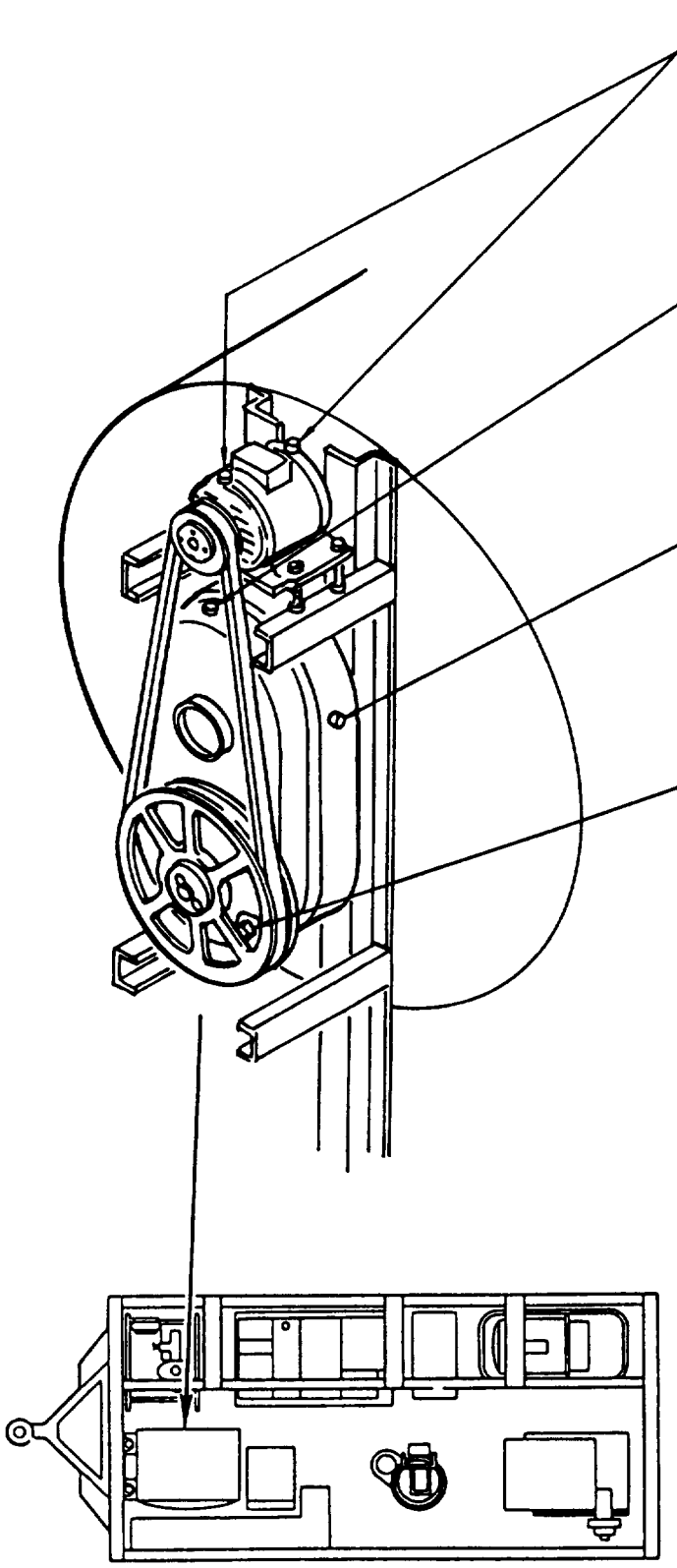
**250**      **BR**      Nylon Ball Cap (O)  
 (Lightly grease  
 top of hex ball.)  
 (See note 3.)

**250**      **BR**      Extractor Brake  
 Drum and Shoe (O)  
 (3 fittings)  
 (Apply 1 pump of  
 grease gun to each  
 fitting.)

**1000**      **0-156**      Center Fluid  
 Drive Unit (O)  
 Drain Plug  
 (DO NOT ADD OIL)  
 (See note 4.)

**250**      **BR**      Lid Lock Lever  
 and Lid Hinge  
 Brake (O)  
 (Apply 1 pump  
 of grease gun  
 to each fitting.)

**INTERVAL • LUBRICANT**



- |      |            |   |
|------|------------|---|
| 500  | BR         | Motor Bearings (C)<br>(Apply 1 pump of grease gun to each fitting.)                     |
| 500  | OE/<br>HDO | Gear Reducer<br>Level Plug (O)<br>(Add oil as necessary to maintain correct oil level.) |
| 500  | OE/<br>HDO | Gear Reducer<br>Level Plug (O)<br>(Remove plug and check oil level.)<br>(See note 5.)   |
| 1000 | OE<br>HDO  | Gear Reducer<br>Drain Plug (O)<br>(Drain and refill.)                                   |

**-KEY-**

LUBRICANT	CAPACITY	EXPECTED TEMPERATURE			
		ABOVE + 32°F (ABOVE 0°C)	+ 40°F TO 4°F (+5°C TO -20°C)	0°F TO -65°F (-18°C TO -50°C)	
OE/HDO (MIL-L-2104C)	LUBRICATING OIL, Engine Washer, Gear Reducer Drive Chain Oil Cup	1-1/2 Quarts	OE/HDO 40 OE/HDO 50	OE/HDO 30	OEA
OEA (MIL-L-46167)	LUBRICATING OIL, Engine (Artic)				
GO (MIL-L-2105)	LUBRICATING OIL, Gear Multipurpose	20 OZ (591 CC)			
GAA (MIL-G-10924)	GREASE, Automotive and Artillery		<b>GO 90</b>	GO 90	GO 80
BR (MIL-G-18709)	GREASE, Ball and Roller Bearing		ALL TEMPERATURES		
0-156 (MIL-L-23699)	LUBRICATING OIL, Air Turbine Engine	48 OZ (1.4L)			

**INTERVALS**

Intervals given are for normal operation.

W-Weekly  
**(50 hr)**

Q-Quarterly  
(3 months)  
**(250 hr)**

S-Semiannually  
(6 months)  
**(500 hr)**

Annually  
(12 months)  
(1000 hr)

**NOTES:**

1. Apply grease to bearings by turning caps clockwise one-quarter turn. Fill caps with grease when empty.

**CAUTION**

A level too high may cause overheating at high speeds, or a level too low may cause premature wear or failures at low speed.

2. Fill gear box through the filler plug hole until oil begins to run out of level hole.

3. The gyro ball cap, under the basket, should be lubricated whenever the basket fails to rock freely. If you push one side of the basket down and it fails to rock back to level, lubricate the gyro ball.

**CAUTION**

Too much oil will throw a burden on the motor and could damage it.

Too little oil will result in excessively slow acceleration or failure to reach top speed.

4. If you have lost some oil, drain all the oil out of the unit and replace with a measured amount of 48 oz.

5. Remove level plug and check oil level. Add oil to fill plug hole until oil runs out of level hole.

Copy of this Lubrication Order will remain with the equipment at all times; instructions contained herein are mandatory.

**BY ORDER OF THE SECRETARY OF THE ARMY**

**CARL E. VUONO**

General, United States Army  
Chief of Staff

**OFFICIAL:**

**WILLIAM H. MEEHAN, II**

Brigadier General, United States Army  
The Adjutant General

**DISTRIBUTION:**

To be distributed in accordance with DA Form 12-25E, Operator and Unit Maintenance Requirements for Laundry Unit, Single Trailer Mounted, with Canvas Cover, Type M532.